

57

NO BOAT MATCHES
THIS COMBINATION OF
FEATURES

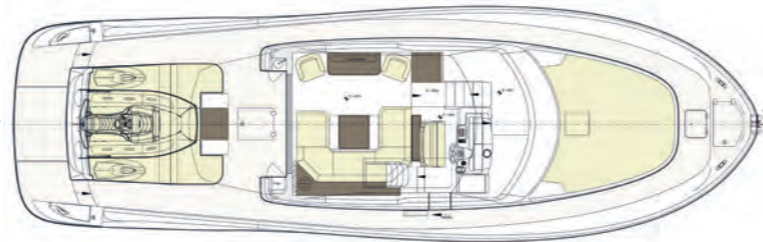
THE ONLY LOBSTER BOAT FEATURING
WALKAROUND DECKS, HELMSMAN'S SIDE
DOOR AND FOLD-OUT BULWARKS.

L
O
B
S
T
E
R



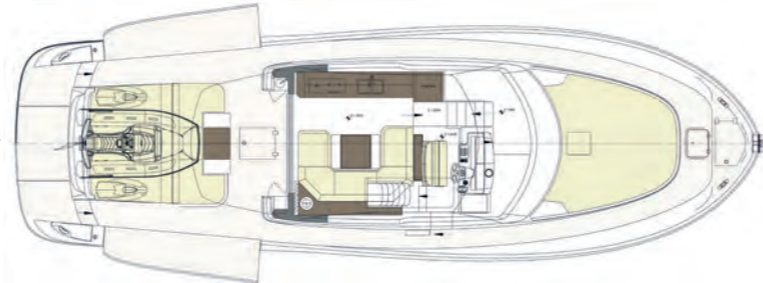
MAIN DECK

Lower deck galley layout



MAIN DECK

Main deck galley layout



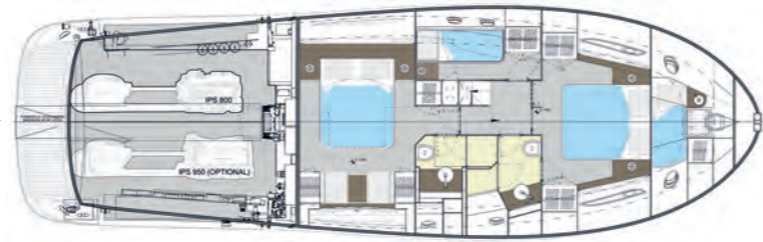
LOWER DECK

Version A



LOWER DECK

Version B



LOWER DECK

Version C



57 LOBSTER

TECHNICAL SPECIFICATIONS

LENGTH OVERALL	17,50 m / 57'40"
WATER LINE LENGTH	15,40 m / 50'52"
BEAM	5,28 m / 17'32"
DRAFT	1,29 m / 4'23"
APPROX. LIGHT DISPLACEMENT	23.000 kg / 50,706 lbs
APPROX. LOAD DISPLACEMENT	26.000 kg / 57,320 lbs
FUEL CAPACITY	2.200 L / 581 US gal
WATER CAPACITY	600 L / 159 US gal
ENGINES	2 x Volvo Penta D8 IPS 800 441 kW / 600 hp 3000 rpm 2 x Volvo Penta D11 IPS 950 533 kW / 725 hp 2500 rpm
MAX SPEED	30 kn - IPS 800 / 35 kn - IPS 950
CRUISING SPEED	23 kn - IPS 800 / 26 kn - IPS 950
CABINS	2 / 3 / 4
BATHROOMS	2
MAX PERSONS CAPACITY	12
DESIGN	Brunello Acampora / Victory Design Cav. Norberto Ferretti Solaris Power Design Team

WWW.SOLARISPOWER.COM

DISCLAIMER AND COPYRIGHTS

Solaris Power Yachts reserves the right to change descriptions, modify, or substitute products in this catalogue without notice. Solaris is a registered trademark of Solaris Yachts Srl, other names may be registered trademarks of their respective owners.

Solaris Power © 2021. All rights reserved. Rendering and illustrations: Victory Design
Photo: A. Muscatello
Graphic design: DL&A Agency

SINCE 1974
BUILT
FOR MARINERS

solaris *POWER*
PER CHI NAVIGA



57
LOBSTER



SINCE 1974 WE BUILD BOATS FOR PASSIONATE MARINERS

Since its foundation in 1974, the philosophy of Solaris has been to build solid and safe marine sailboats according to the highest quality standards, allowing to experience the boat in the maximum comfort even in all sea and wind conditions. Solaris is the European leader in quality sailing yachts, from 40 to 110 feet, and has remained one of the few shipyards in the world still able to combine cutting-edge construction technology with the traditional craftsmanship of finishing and details.

Since 2008 Solaris has entered the power boats sector, applying the same philosophy that has always distinguished Solaris boats: quality, seaworthiness, elegance.

The Solaris Power represent a new generation of motor boats, offering comfort, stability and excellent performance in both displacement and planing. The particular shape of the hull guarantees high stability at anchor. The deep V-shaped bow makes the passage on the wave very smooth and leaves dry the deck even in rough seas. The Volvo IPS engines and the particular geometry of the CFD designed hull ensure the Solaris Power boats low fuel consumption and great endurance. Thanks to the supplied joystick mooring maneuvers are very easy also in narrow waters.



TRADITIONAL CRAFTSMANSHIP

There are not many boatyards left today, that can combine leading-edge technology with traditional craftsmanship of details and finishing as Solaris Yachts does.



THE LOBSTER BOAT HERITAGE

Solaris was among the first in Europe to build a lobster boat, the 47-foot Express Cruiser, by Bruce King, designer of the famous American Hinckley line.

