

48

OPEN

solaris *POWER*

DAL 1974 PER CHI NAVIGA

TECHNICAL
SPECIFICATIONS

48 OPEN

TECHNICAL SPECIFICATIONS

LENGTH OVERALL	14,86 m / 48'74"
WATER LINE LENGTH	13,40 m / 43'95"
BEAM	4,87 m / 15'97"
DRAFT	1,05 m / 3'44"
APPROX. LIGHT DISPLACEMENT	14.000 kg / 30,864 lbs
APPROX. LOAD DISPLACEMENT	16.800 kg / 37,037 lbs
FUEL CAPACITY	1.500 L / 396 US gal
WATER CAPACITY	430 L / 114 US gal
ENGINES	2 x Volvo Penta D6 IPS 600 320 kW / 435 hp 3500 rpm 2 x Volvo Penta D6 IPS 650 353 kW / 480 hp 3800 rpm
MAX SPEED	34 kn 36 kn
CRUISING SPEED	23 kn 26 kn
CABINS	1/2
BATHROOMS	1 + 1
MAX PERSONS CAPACITY	12
DESIGN	Brunello Acampora / Victory Design Cav. Norberto Ferretti Solaris Power Design Team



EUROPEAN YACHT OF THE YEAR 2020

FLARED BOW FOR SMOOTH SAILING
THROUGH THE WAVES. GREAT STABILITY
WHILE CRUISING AND AT ANCHOR.
THE ONLY OPEN BOAT WITH A TRUE
WALKAROUND DECK, FEATURING THE SAME
CABIN SPACE OF A CONVENTIONAL CABIN
CRUISER.

O
P
E
N

THE GREAT SEAGOING CAPABILITIES OF SOLARIS POWER

SMOOTH SAILING THROUGH THE WAVES AND A DRY DECK IN CHOPPY SEAS

The sharp shape of the bow and the pronounced flare, softens the passage through the waves and keeps the deck dry.

GREAT STABILITY WHILE CRUISING AND AT ANCHOR

The hull shape guarantees great stability and comfort when cruising and at anchor, without the need for stabilizers.

LOW FUEL CONSUMPTION RESULTING IN EXCELLENT RANGE

The advanced studies on the shapes of the hull, ensure low fuel consumption, resulting in excellent range and reduced CO₂ emissions. One example, the 48 Open at a cruising speed of 26 knots only needs 4.8 litres per mile.

EFFICIENT CRUISING BOTH IN DISPLACEMENT AND IN PLANING MODE

Unlike ordinary boats with planing hulls, Solaris Power are capable to cruise steadily and without roll even in displacement mode from 10 to 14 knots.



THE LATEST PROPULSION TECHNOLOGY

Solaris Power yachts feature cutting-edge propulsion working in synergy with the shape of the hull. This is the outcome of intense collaboration between Victory Design and Volvo Penta. Since 2005 Brunello Acampora has been studying shapes that are optimised for the

IPS, including 'azimuth pods' for planing hulls; having found they generate huge performance improvements. Moreover, the compactness of the propulsion apparatus yields a noticeable increase of living space: the interiors of these boats compare favourably with much bigger

yachts, and make the tender easy to stow, launch and haul.

EASY DOCKING THANKS TO THE JOYSTICK

Docking manoeuvres are simplified thanks to the joystick and the azimuth pods, even with a single person at the controls.

LOW NOISE LEVEL AND ZERO VIBRATIONS

The absence of the rotating masses of the shaft line and the engine exhausts in the propeller pods ensure absence of vibrations and low noise.

SPACIOUS AND WELL VENTILATED ENGINE ROOM

Offering easy access to the engine itself and to the other systems.

INNOVATIONS FOR MORE ON-BOARD COMFORT



WALKAROUND

The decks of all models include lateral walkways that afford easy and safe movement from bow to stern.



VERY LARGE SUNBEDS

All Solaris Power have the bow sundeck. Open models also offer an aft sundeck.



TENDER GARAGE

Under the aft opening sundeck there is a large garage that can be used for the tender and various water toys.



FOLD-OUT BULWARKS

These can be opened for enhanced enjoyment of the cockpit, increasing its surface by 20%.



HYDRAULIC GANGWAY

The hydraulic gangway turns into a comfortable swim ladder.



LAYOUT IN MULTIPLE VERSIONS

The internal and external layouts are available in several versions to suit the tastes and needs of owners.



LAYOUTS

MAIN DECK



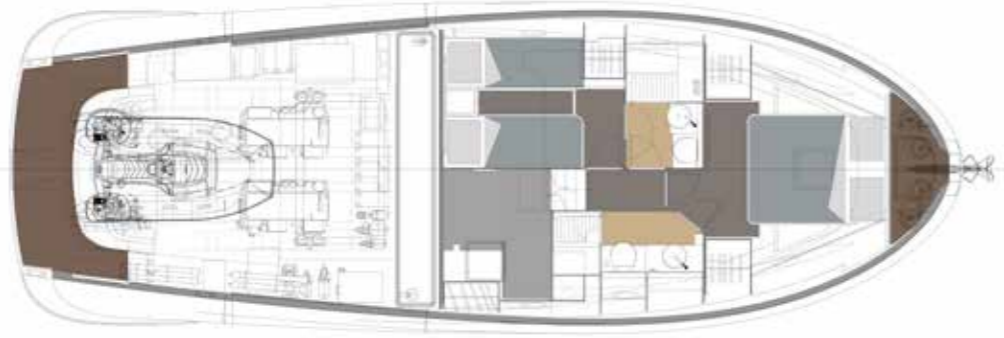
LOWER DECK

Version A



LOWER DECK

Version B



LOWER DECK

Version C







solarisPOWER

MAKE YOUR SOLARIS POWER UNIQUE



HULL AND DECK



WHITE



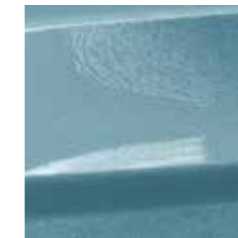
EXTREME SILVER



SOLARIS BLUE



JAZZY BLUE



SILVER LAKE



CHAMPAGNE

WOODS



OAK (STD)



WALNUT (OPT)

OUTDOOR UPHOLSTERY



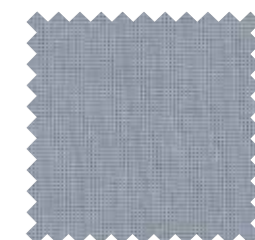
ICE CREAM



CREAM

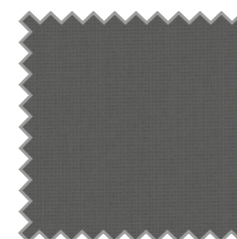


CAMEL



ALUMINIUM

BIMINI

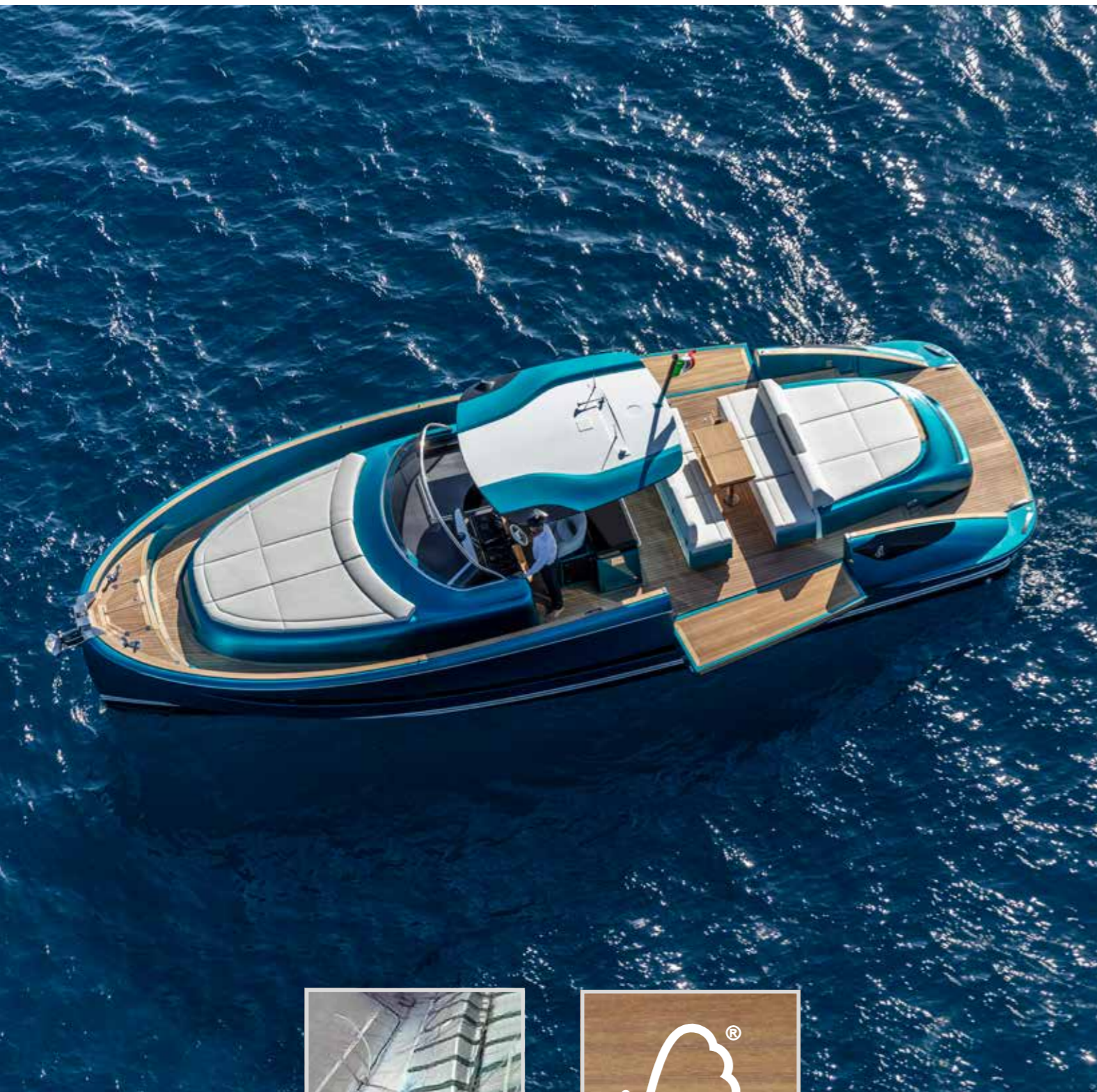


BLACK

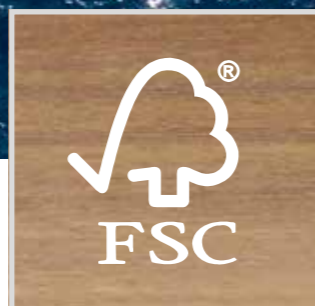


IVORY

RESPECT FOR THE ENVIRONMENT



INFUSION LAY-UP SYSTEM



FSC CERTIFIED WOOD SUPPLY

STANDARD SPECIFICATIONS

HULL AND DECK

- Stainless steel deck equipment
- Electric winch 1500 W windlass with telescopic hawse and remote control
- Galvanized delta anchor kg. 20 and 50mt 8mm chain
- Teak stern platform
- Platform bathing ladder extractable made by stainless steel and teak
- Hydraulic gangway
- Solid teak gunwale
- Bow and stern sun bathing mattresses and stern seats
- Plexiglass and stainless steel windscreen
- Sliding crystal door for cabins access
- Acoustic alarm for water in stern and bow bilges
- Midboat bollards (1 each side)
- Fenders plugs
- Antifouling paint
- Stern steps courtesy lights
- Zinc anodes

HELM CONSOLE

- Control station with complete instrumentation
- Three pilot chairs
- Throttle lever - electric inverter with Joystick
- 12" Volvo Penta navigation display
- Volvo Penta auto pilot
- Rudder indicator
- Echo sounder, log milometer and water temperature releator with tridata DST 800 system
- Fuel and water indicator
- VHF Garmin 210i con DSC system
- Compass

COCKPIT

- Lifejacket peak with line
- Mooring covers
- Outdoor table

OWNER'S CABIN

- Two wardrobes
- Sides windows with two openable portlights
- Reading lights
- Double bed with mattress
- Led lights
- Beauty table and seat (only for one cabin version)
- Vinyl covered ceiling
- Mirror
- Curtains

OWNER'S BATHROOM

- Bathroom accessories
- Wardrobe and shelves
- Detached shower with crystal door
- Glass washbasin
- Led lights
- Openable portlight (1)
- Mirror
- Pleated curtain
- Ceramic electric WC and control panel 3/4 full

LOWER DECK DINETTE (ONLY FOR ONE CABIN VERSION)

- Sides windows with one openable portlight
- Fabric sofa
- Stowage peaks under the seats
- Low cabinet
- Cabinet with shelves
- Pleated curtain

PROPULSION SYSTEM AND ENGINE ROOM

- VOLVO PENTA IPS 600 (320 Kw / 435 Hp) engines with manual interceptor system
- Electronic blowers (nr. 2)
- Volvo toolbox
- Hatch and stainless steel ladder
- Boiler 220V 25 lt.
- Automatic/manual fire extinguisher 12 kg.
- Fuel filters water separator
- Inspection lights
- Bow watertight bulkhead
- Stainless steel gasoline tank 1500lt

BOW PEAK

- Chain peak
- Two 25mt mooring lines
- Winch remote control
- Inspection hatch
- Fresh water shower for chain washing

UNMOUNTED CREW CABIN

- Deck access portlight
- Stowage peak access portlight
- Access ladder
- Planking
- N. 2 storage shelves

SYSTEMS

- Joystick docking assistance
- Remote control for engines power shut-off
- Fire extinguisher
- Electric equipment composed by: Kohler generator 5000W
- generator battery 60Ah 12V
- engines battery set 170Ah 12V
- auxiliary services battery set 170Ah 12V
- battery charge 80Ah 12V
- 12V illumination in cabins
- Battery cut off switch
- Bilges output system with 3 pumps (2 two of them automatics)
- Fresh water pump
- VHF transceiver system
- Stabilising manual interceptor system
- Electric WC system with fresh water and 75lt black water tank
- 23Ah quay plugs
- Grey water output system with electropump and tanks Tot. 240 lt
- Stainless steel fresh water tank 430lt

EQUIPMENTS

- 220 V quay cable
- Fendresses n. 6

HARD TOP

- Mast with navigation lights and flag
- Acoustic alarm
- Navigation lights

OUTDOOR KITCHEN

- 2 burners induction cooktop
- Worktop
- 90lt fridge
- Popup sink
- Dustbin
- Stainless steel basin
- Led lights
- Drawer and closets

DISCLAIMER AND COPYRIGHTS

Solaris Power Yachts reserves the right to change descriptions, modify, or substitute products in this catalogue without notice. Solaris is a registered trademark of Solaris

Yachts Srl, other names may be registered trademarks of their respective owners. Solaris Power © 2023. All rights reserved.

